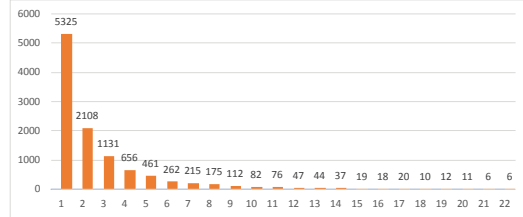


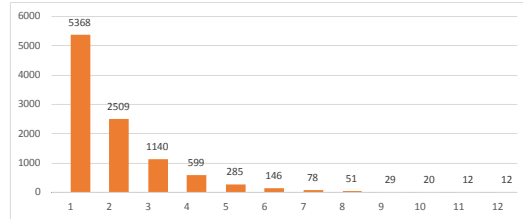
Last 10 years, >5 count in y axis

Spacing & Multi-unit Horizontal



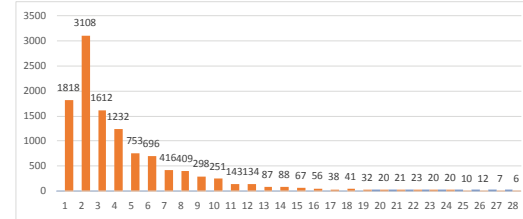
e.g. 6,355 (x axis) sections with 1 (y axis) spacing

Pooling



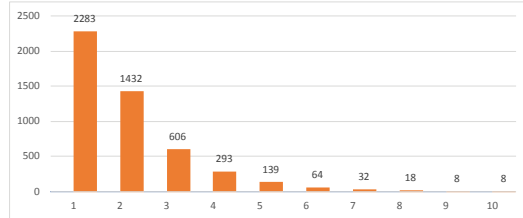
e.g. 5,368 (x axis) sections with 1 (y axis) pooling

Location Exception

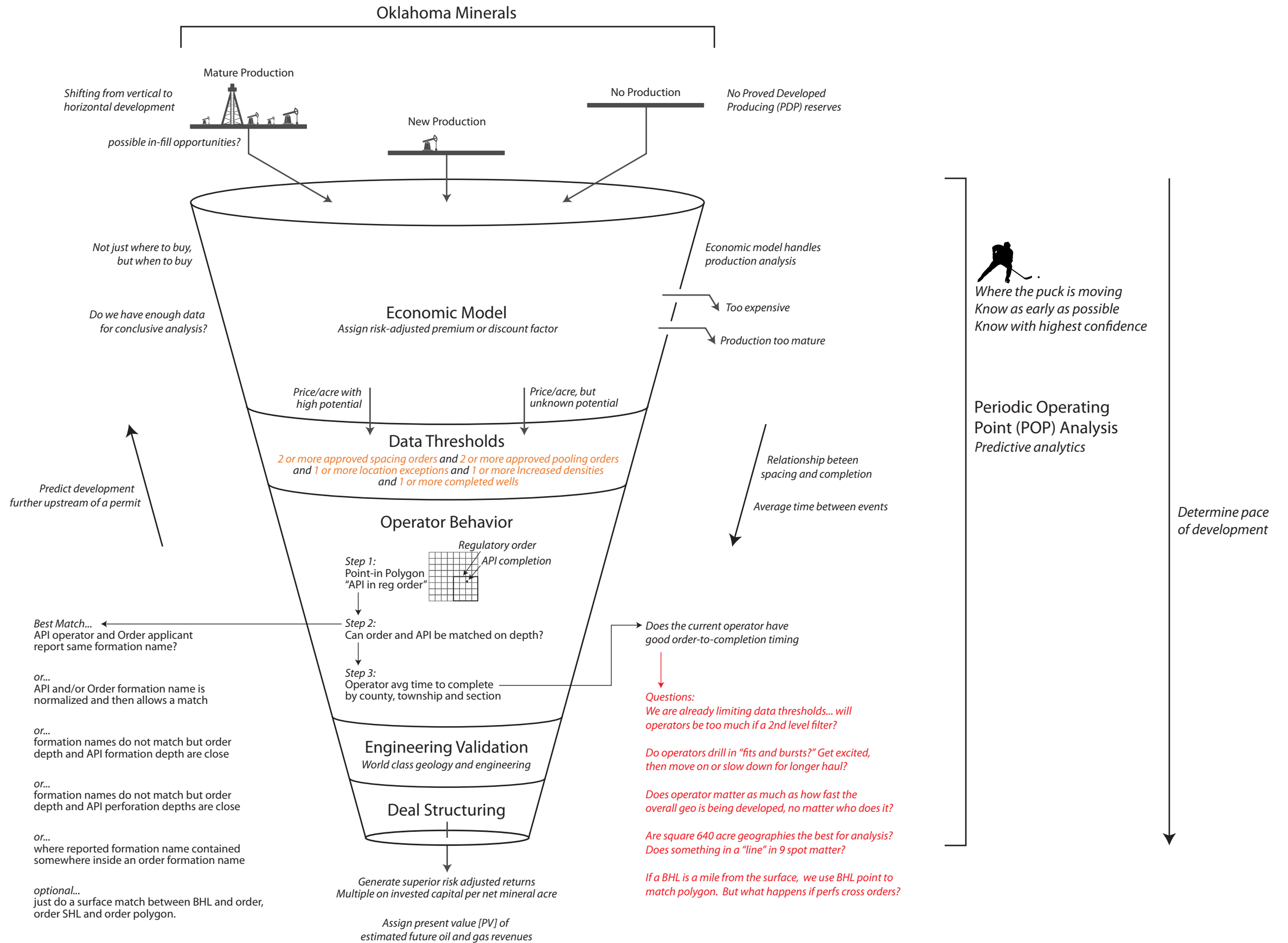


e.g. 1,818 (x axis) sections with 1 (y axis) location exception

Increased Density



e.g. 2,283 (x axis) sections with 1 (y axis) increased density



or... API and/or Order formation name is normalized and then allows a match

or... formation names do not match but order depth and API formation depth are close

or... formation names do not match but order depth and API perforation depths are close

or... where reported formation name contained somewhere inside an order formation name

optional... just do a surface match between BHL and order, order SHL and order polygon.